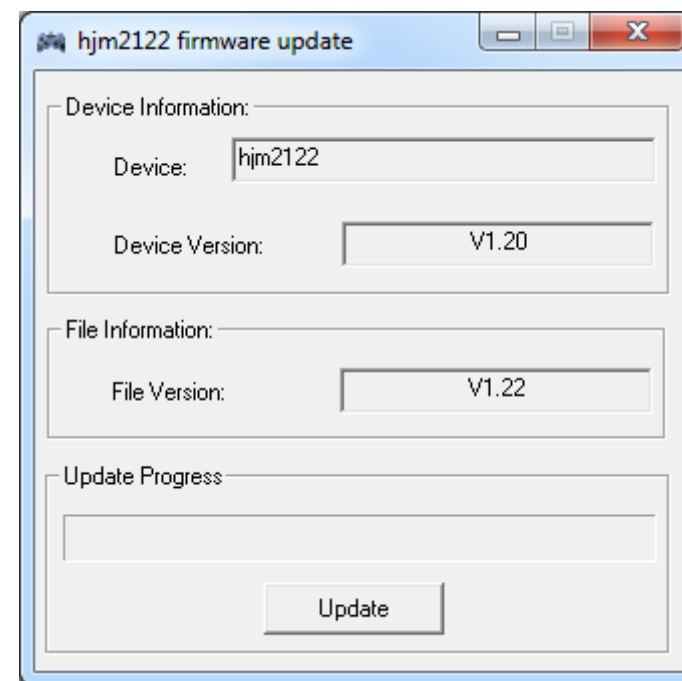
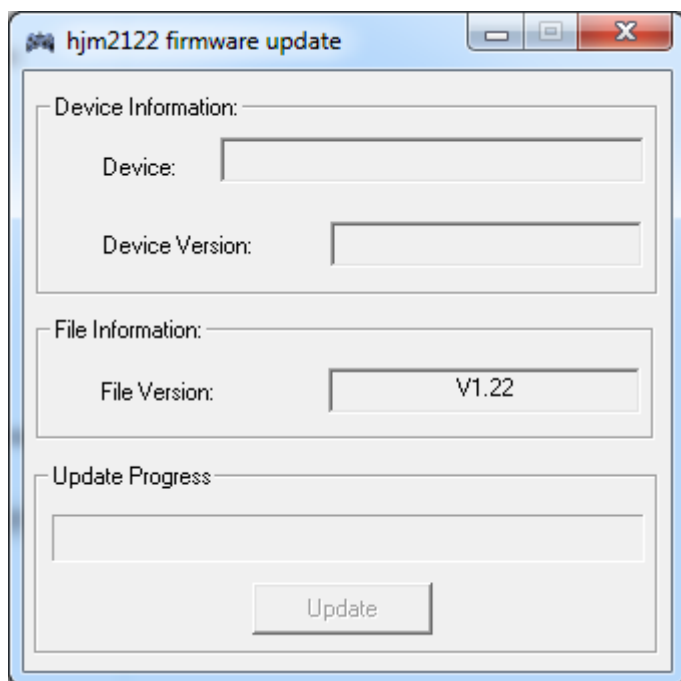


# FIRMWARE UPDATE TRAILBLAZER RACING WHEEL – XBOX ONE



## Installing a firmware update for the TRAILBLAZER Racing Wheel (Xbox One®)

Note: A Windows® PC is required for this procedure. You do not need to connect a gamepad to the racing wheel's USB port or install the Windows® driver.

1. Make sure that the TRAILBLAZER Racing Wheel is disconnected from your PC.
2. Open the update program by double-clicking it.
3. The program window shown above will open. The Update button won't be clickable yet (the window arrangement may differ slightly).

4. Press and hold the VIEW and MENU buttons simultaneously on the racing wheel and then connect it to any free port on your PC while keeping these buttons held depressed.
5. The program window will now look like the image above, with the Update button now clickable. You can now release the VIEW and MENU buttons.
6. Click Update and wait until the update procedure has completed before unplugging the racing wheel's USB connector.

If the update process fails or the Update button still can't be clicked (greyed out), repeat the process starting from step 4. Be aware that the VIEW and MENU buttons must be held depressed when connecting the steering wheel to the PC.