



# RAZER WOLVERINE TOURNAMENT EDITION

MASTER GUIDE

Compete & win with the **Razer Wolverine Tournament Edition**, a customizable controller for competitive play both on Xbox One & PC.

Decked out with 4 remappable Multi-Function Buttons, the Razer Wolverine TE can be adapted to suit your individual needs.

Razer Wolverine TE is also the first controller with Razer Chroma lighting, allowing you to further personalize your controller or enjoy an even more immersive experience with game-integrated smart lighting.

# CONTENTS

1. PACKAGE CONTENTS / SYSTEM REQUIREMENTS.....	3
2. REGISTRATION / TECHNICAL SUPPORT.....	4
3. TECHNICAL SPECIFICATIONS.....	5
4. DEVICE LAYOUT.....	6
5. SETTING UP YOUR RAZER WOLVERINE TE.....	8
6. USING YOUR RAZER WOLVERINE TE.....	10
7. INSTALLING RAZER SYNAPSE FOR XBOX.....	11
8. SAFETY AND MAINTENANCE .....	13
9. LEGALESE .....	14

---

## 1. PACKAGE CONTENTS / SYSTEM REQUIREMENTS

### PACKAGE CONTENTS

- Razer Wolverine TE gaming controller for Xbox One
- USB to Micro-USB cable + breakaway cable
- Important Product Information Guide

### SYSTEM REQUIREMENTS

- Xbox One / Xbox One S / Xbox One X  
OR
- PC (Windows®10 or higher)

### SAFETY STATEMENT

**IMPORTANT!** Before using the Xbox One with this product, read the Xbox One instruction manual for safety, health, and other information regarding the use of the Xbox One.

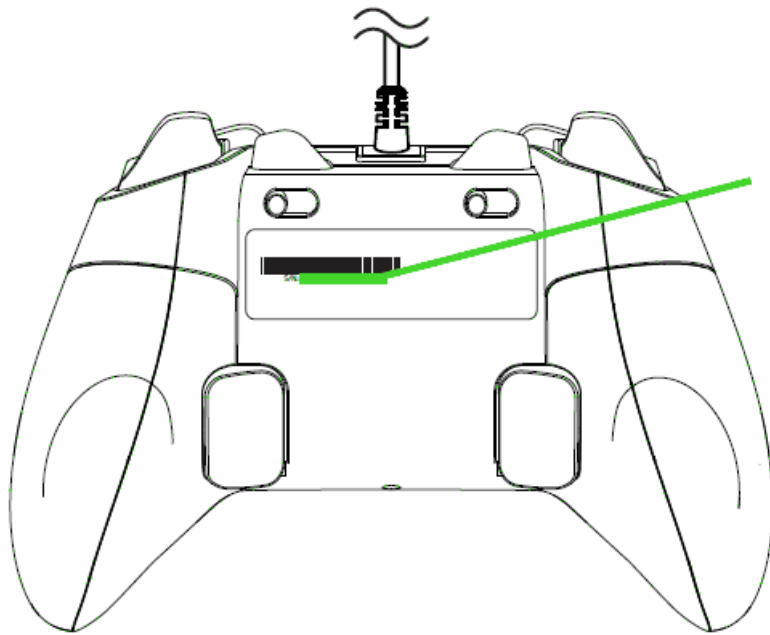
---

## 2. REGISTRATION / TECHNICAL SUPPORT

### REGISTRATION

Register your product online at [razerid.razer.com/warranty](https://razerid.razer.com/warranty) to get real-time information on your product's warranty status.

If you haven't registered for a Razer ID yet, register now at [razerid.razer.com](https://razerid.razer.com) to get a wide range of Razer benefits.



*Your product's serial number  
can be found here.*

### TECHNICAL SUPPORT

- 1 year limited manufacturer's warranty.
- Free online technical support at [support.razer.com](https://support.razer.com).

---

## 3. TECHNICAL SPECIFICATIONS

### TECHNICAL SPECIFICATIONS

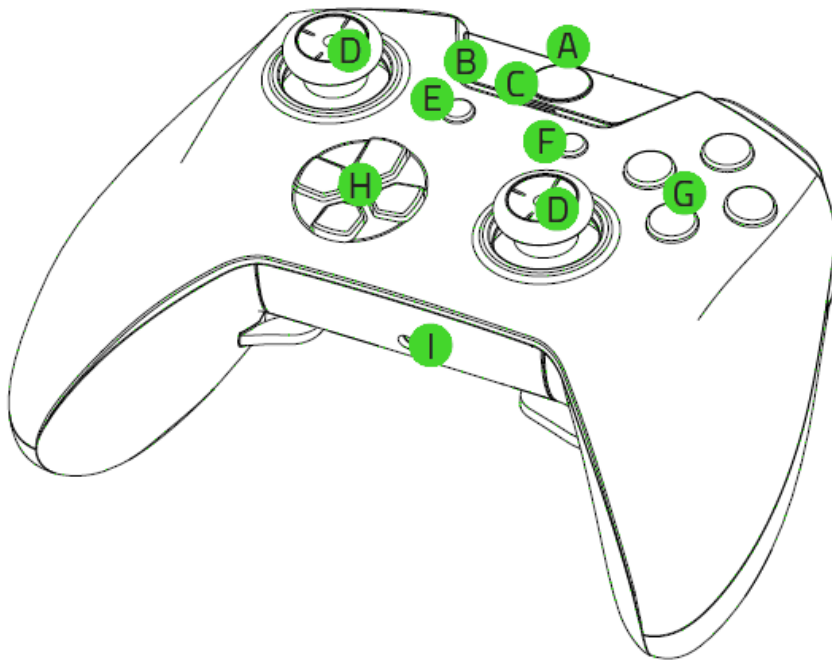
- 2 shoulder Multi-Function Bumpers
- 2 Multi-Function Triggers
- 4 Tactile Switch ABXY action buttons
- 4 button Quick Control Panel
- Multi-Color Razer Chroma Lighting Strip
- Optional trigger stops for rapid-fire
- 3.5 mm audio port for stereo audio output and microphone input
- Quick-release cable feature
- Detachable 3 m / 10 ft lightweight braided fiber cable with Micro-USB connector

### APPROXIMATE SIZE & WEIGHT

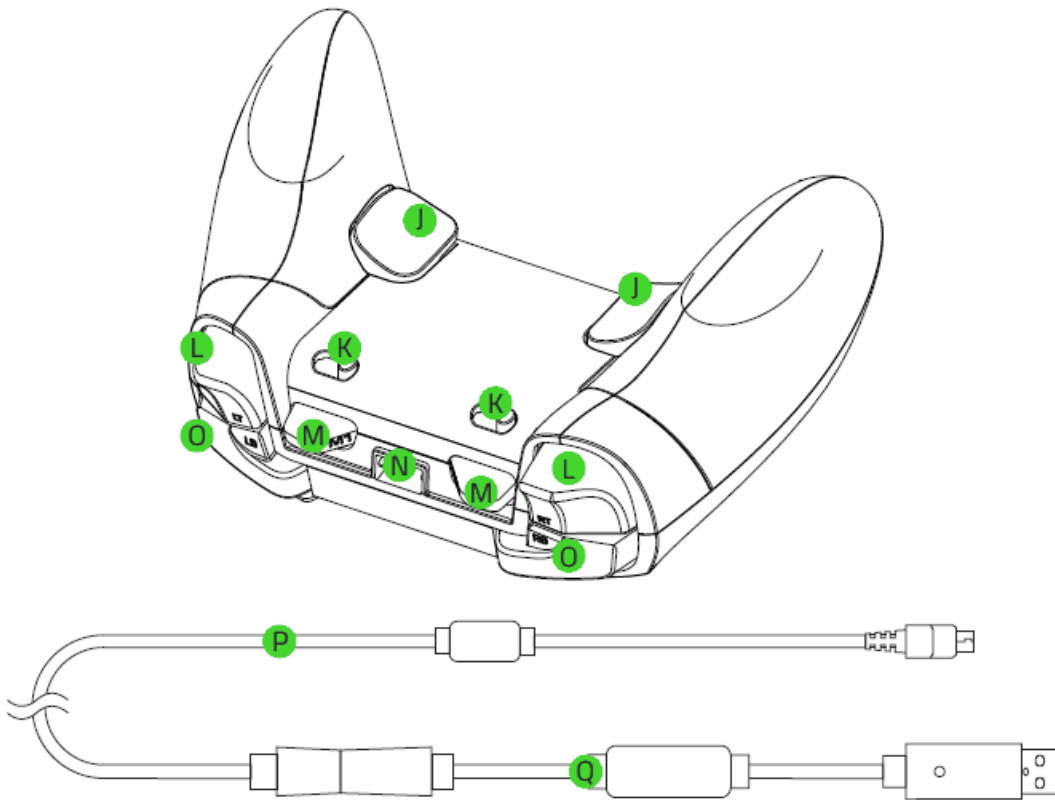
- Length: 106 mm / 4.17 in
- Width: 156 mm / 6.14 in
- Height: 66 mm / 2.60 in
- Weight: 260 g / 0.57 lbs

---

## 4. DEVICE LAYOUT



- A. Xbox button
- B. Razer Chroma lighting
- C. Power indicator
- D. Analog thumbsticks
- E. View button
- F. Menu button
- G. Action buttons
- H. Directional pad
- I. 3.5 mm headset port



- J. Multi-Function Triggers (M3 / M4)
- K. Trigger stop switches
- L. Triggers (LT / RT)
- M. Multi-Function Bumpers (M1 / M2)
- N. Micro-USB port
- O. Bumpers (LB / RB)
- P. USB to Micro-USB cable
- Q. Breakaway cable

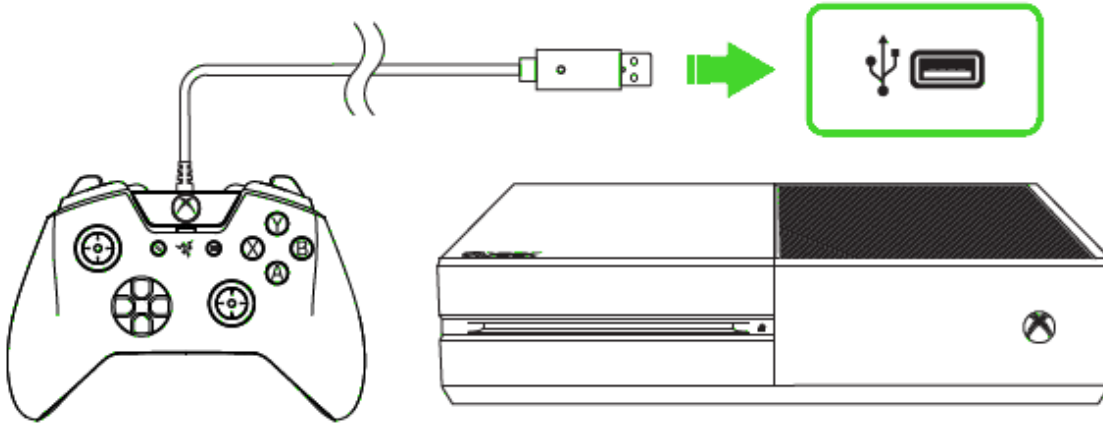


---

## 5. SETTING UP YOUR RAZER WOLVERINE TE

### CONNECTING TO YOUR XBOX ONE

1. Connect your Razer Wolverine TE to your Xbox One using the USB to Micro-USB cable.

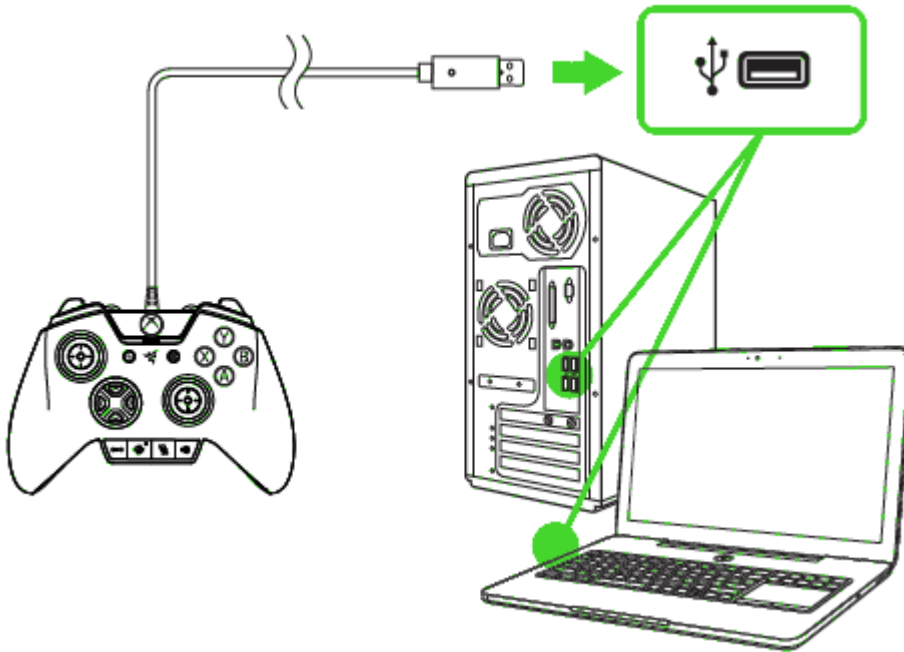


2. Press the Xbox button and your Razer Wolverine TE is ready to go.



## CONNECTING TO YOUR PC

1. Connect your Razer Wolverine TE to your PC using the USB to Micro-USB cable.



2. Wait until the Xbox One Controller drivers are automatically installed or manually update the drivers through the Device Manager.



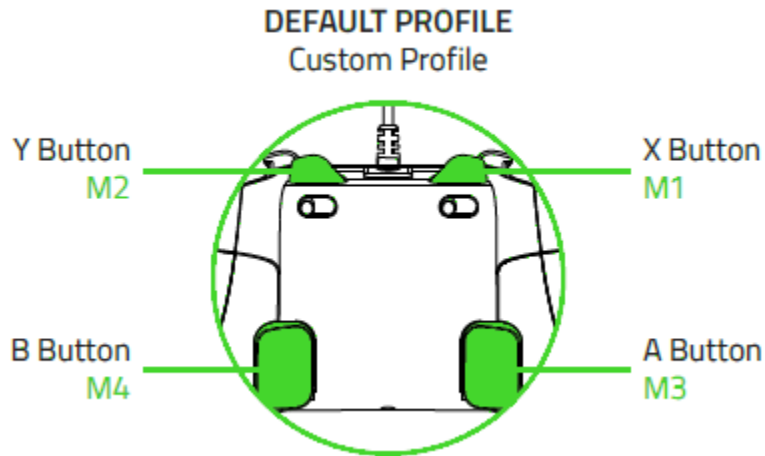
100%

---

## 6. USING YOUR RAZER WOLVERINE TE

### REMAPPING THE MULTI-FUNCTION TRIGGERS (MFT) AND BUMPERS (MFB)

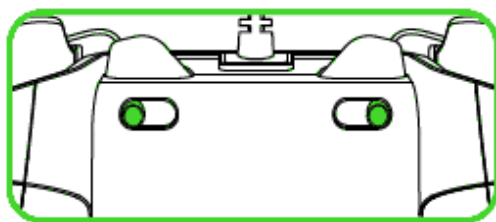
By default, each profile is mapped to a specific function as shown here.



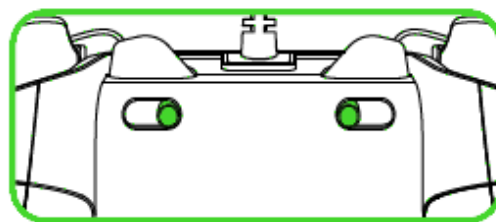
**i** *The Xbox button cannot be remapped to the MFB or MFT instead, it will remove the current mapping. The sensitivity settings can be customized through the Razer Synapse for Xbox app.*

### USING THE TRIGGER STOP SWITCHES

The Trigger Stops allows you to activate the Left and Right Triggers faster by shortening their travel distance and reducing their response time (Active Hair Trigger Mode). To enable the Trigger Stops, simply slide the switches outwards; and to disable the Trigger Stops, slide the switches inwards.



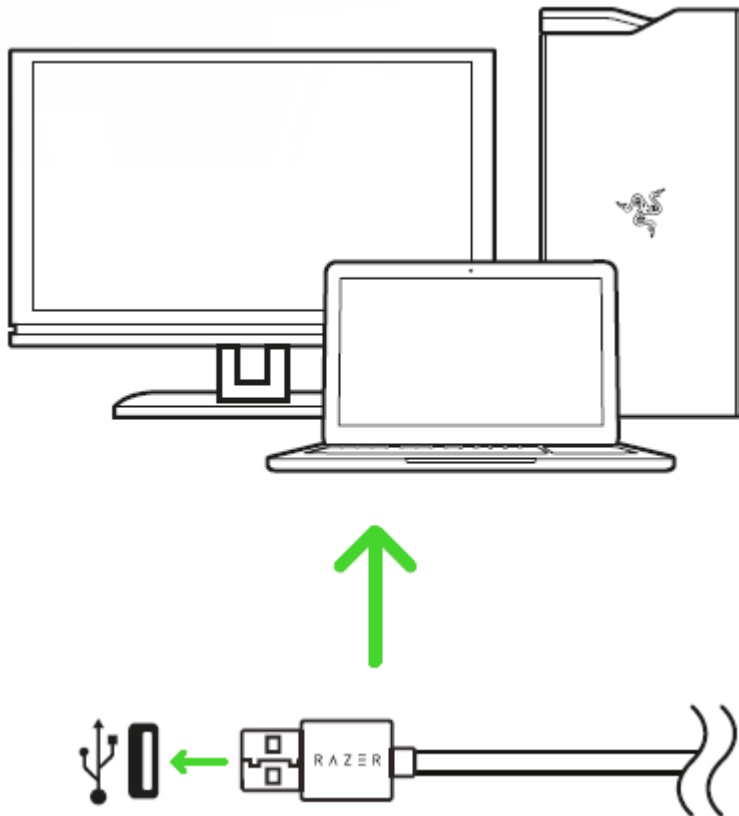
Enable



Disable

---

## 7. INSTALLING RAZER SYNAPSE FOR XBOX









Step 1: Make sure your Razer device is connected to the USB port of your gaming console or PC.

Step 2: Download and install the Razer Synapse For Xbox app from the Xbox Store of your gaming console or from [razer.com/software](https://www.razer.com/software) on your PC.

## CHROMA LIGHTING EFFECTS

Several lighting effects are made available for your Razer Wolverine TE when you download and install the Razer Synapse For Xbox app. Listed below are the lighting effects which you can customize to your controller:

	Name	Description	How to set up
	Breathing	The lighting fades in and out of the selected color(s)	Select up to 2 colors or randomize colors
	Immersive	The LEDs will light up when the controller vibrates.	Select a color
	Reactive	The LEDs will light up when a button is pressed and will fade off after a specified period of time.	Select the length of time for the LEDs to remain lit.
	Spectrum cycling	The LEDs will cycle between 16.8 million colors indefinitely	No further customization required
	Static	The LEDs will remain lit in the selected color	Select a color
	Wave	The lighting will scroll in the direction selected	Select a wave direction

Congratulations, you are now ready to use your Razer Wolverine TE. Have fun!

---

## 8. SAFETY AND MAINTENANCE

### SAFETY GUIDELINES

In order to achieve maximum safety while using your Razer Wolverine TE, we suggest that you adopt the following guidelines:

Should you have trouble operating the device properly and troubleshooting does not work, unplug the device and contact the Razer hotline or go to [support.razer.com](https://support.razer.com) for support. Do not attempt to service or fix the device yourself at any time.

Do not take apart the device (doing so will void your warranty) and do not attempt to operate it under abnormal current loads.

Keep the device away from liquid, humidity or moisture. Operate the device only within the specific temperature range of 0°C (32°F) to 40°C (104°F). Should the temperature exceed this range, unplug and/or switch off the device in order to let the temperature stabilize to an optimal level.

### MAINTENANCE AND USE

The Razer Wolverine TE requires minimum maintenance to keep it in optimum condition. Once a month we recommend you unplug the device from the computer and clean it using a soft cloth or cotton swab to prevent dirt buildup. Do not use soap or harsh cleaning agents.

---

## 9. LEGALESE

### **COPYRIGHT AND INTELLECTUAL PROPERTY INFORMATION**

©2017 Razer Inc. All rights reserved. Razer, the triple-headed snake logo, Razer logo, “For Gamers. By Gamers.”, and “Powered by Razer Chroma” logo are trademarks or registered trademarks of Razer Inc. and/or affiliated companies in the United States or other countries. All other trademarks and trade names are the property of their respective owners and other company and product names mentioned herein may be trademarks of their respective companies.

This product is manufactured under license from Microsoft Corporation. Microsoft, Windows, the Windows Logo, Xbox, Xbox LIVE, Xbox One, and the Xbox logos are trademarks of the Microsoft group of companies.

Razer Inc. (“Razer”) may have copyright, trademarks, trade secrets, patents, patent applications, or other intellectual property rights (whether registered or unregistered) concerning the product in this guide. Furnishing of this guide does not give you a license to any such copyright, trademark, patent or other intellectual property right. The Razer Wolverine TE (the “Product”) may differ from pictures whether on packaging or otherwise. Razer assumes no responsibility for such differences or for any errors that may appear. Information contained herein is subject to change without notice.

### **LIMITED PRODUCT WARRANTY**

For the latest and current terms of the Limited Product Warranty, please visit [razer.com/warranty](https://www.razer.com/warranty).

### **LIMITATION OF LIABILITY**

Razer shall in no event be liable for any lost profits, loss of information or data, special, incidental, indirect, punitive or consequential or incidental damages, arising in any way out of distribution of, sale of, resale of, use of, or inability to use the Product. In no event shall Razer’s liability exceed the retail purchase price of the Product.

### **GENERAL**

These terms shall be governed by and construed under the laws of the jurisdiction in which the Product was purchased. If any term herein is held to be invalid or unenforceable, then such term (in so far as it is invalid or unenforceable) shall be given no effect and deemed to be excluded without invalidating any of the remaining terms. Razer reserves the right to amend any term at any time without notice.