



RAZER SEIREN EMOTE

MASTER GUIDE

Wow your followers with the world's first streaming microphone featuring an Emote Engine powered display that lights up interactive emotes and takes your showmanship to the next level. A hypercardioid pickup pattern powered condenser microphone accurately records your voice and eliminates background noise.

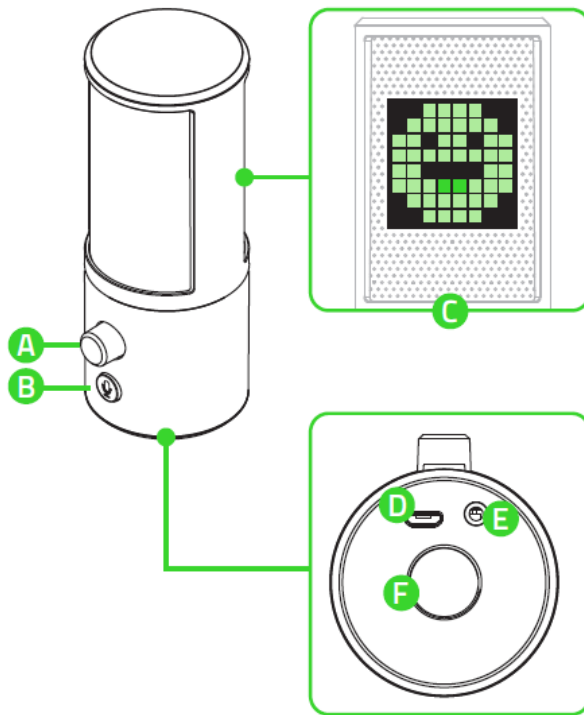
CONTENTS

1. WHAT'S INSIDE / WHAT'S NEEDED.....	3
2. LET'S GET YOU COVERED.....	5
3. TECHNICAL SPECIFICATIONS.....	6
4. SETTING UP YOUR RAZER SEIREN EMOTE.....	7
5. USING YOUR RAZER SEIREN EMOTE.....	9
6. CONFIGURING YOUR RAZER SEIREN EMOTE VIA RAZER SYNAPSE.....	10
7. SAFETY AND MAINTENANCE	16
8. LEGALESE.....	17

1. WHAT'S INSIDE / WHAT'S NEEDED

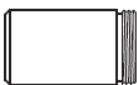
WHAT'S INSIDE

- Razer Seiren Emote

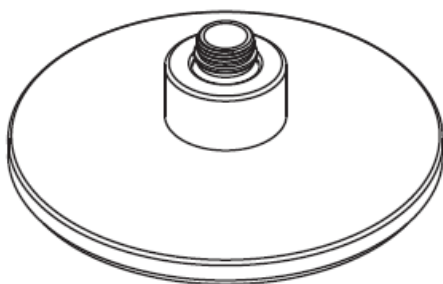


- A. Headphone volume control
- B. Mic mute button
- C. Stream-Reactive Lighting
- D. Micro-USB port
- E. 3.5 mm headphone port
- F. Thread mount

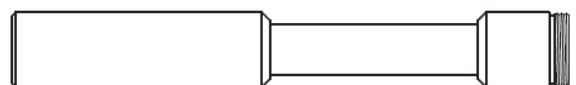
- Support rod



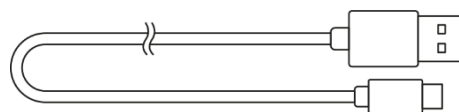
- Desk stand base



- Gooseneck extender



- Micro-USB to USB cable



- Important Product Information Guide

WHAT'S NEEDED

PRODUCT REQUIREMENTS

- PC with a free USB port

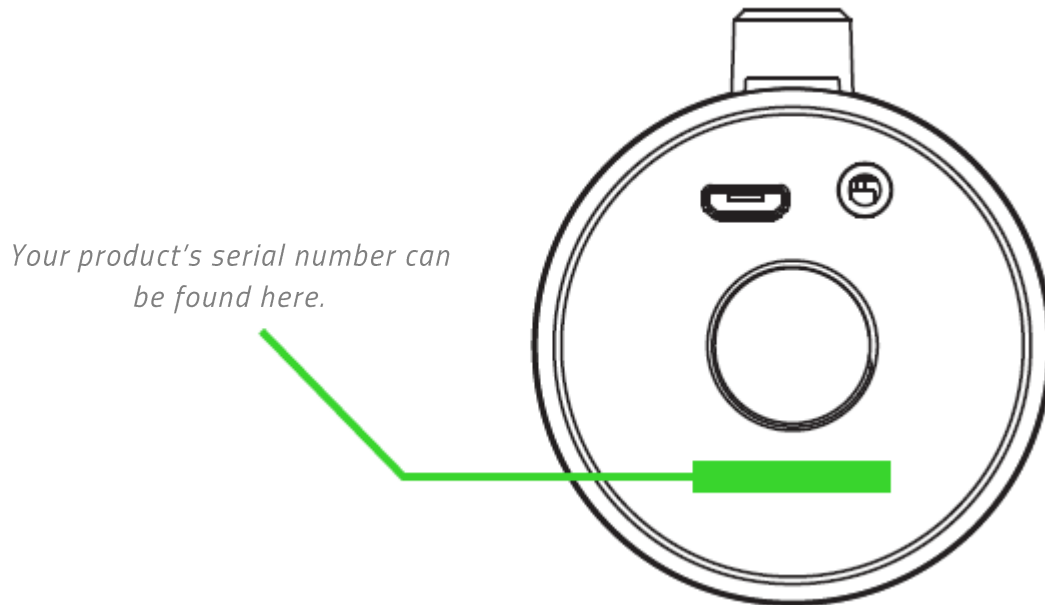
RAZER SYNAPSE REQUIREMENTS

- Windows® 7 64-bit (or higher)
- Internet connection for software installation

 *Compatible with Streamlabs, OBS and XSplit (software license fee may apply).*

2. LET'S GET YOU COVERED

You've got a great device in your hands, complete with a 1-year limited warranty coverage. Now maximize its potential and score exclusive Razer benefits by registering at razerid.razer.com



Got a question? Ask the Razer Support Team at support.razer.com

3. TECHNICAL SPECIFICATIONS

MICROPHONE

- Power required / consumption: 5 V, 500 mA
- Sample rate: Min 44.1 kHz / Max 48 kHz
- Bit rate: 16 bit
- Capsules: Ø25 mm condenser capsules
- Polar patterns: Hypercardioid
- Frequency response: 100 Hz–20 kHz
- Sensitivity: 20 mV / Pa (at 1 kHz)
- Max SPL: 110 dB (THD < 1% at 1 kHz)

HEADPHONE AMPLIFIER

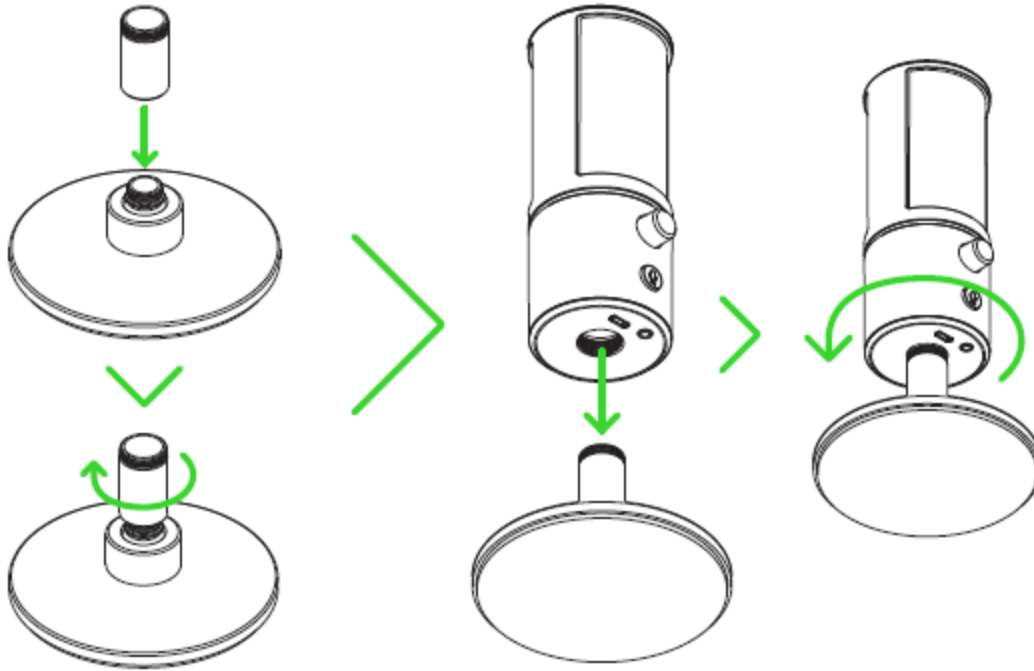
- Impedance: $\geq 16 \Omega$
- Power output (RMS): 110 mW (at 16Ω)
- THD: < 0.1% (at 1 kHz)
- Frequency response: 20 Hz – 20 kHz
- Signal-to-noise ratio: ≥ 100 dB

DISPLAY RGB LED

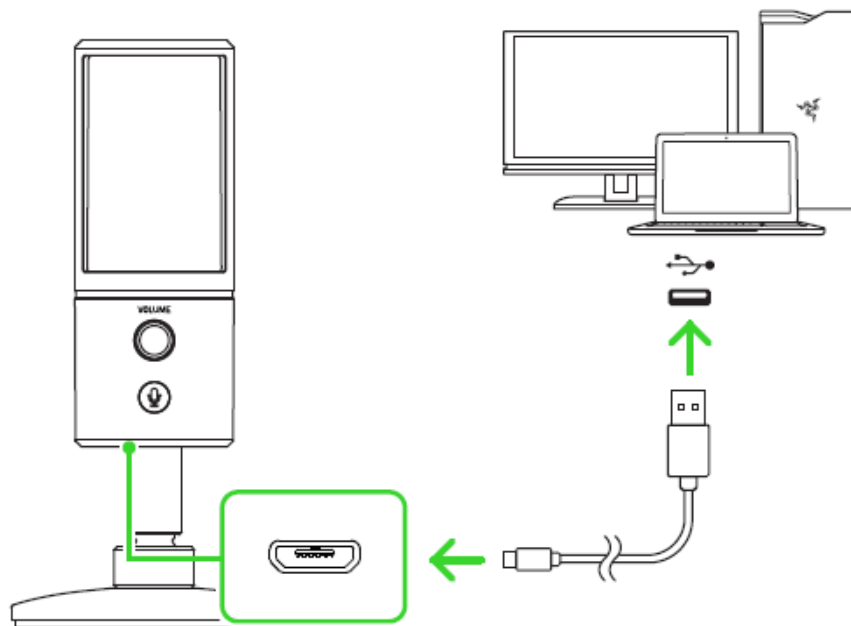
- 8 x 8 RGB LED Matrix

4. SETTING UP YOUR RAZER SEIREN EMOTE

1. Tighten the support rod or the gooseneck extender onto the desktop base, and then securely fasten the microphone in place.



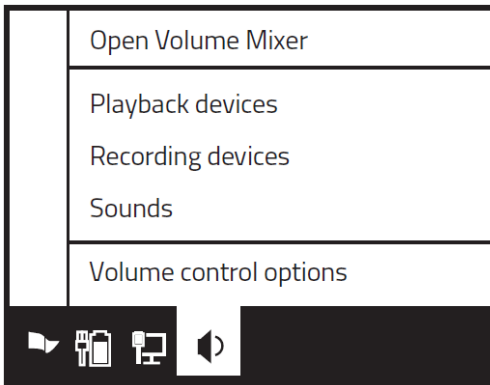
2. Connect the Razer Seiren Emote to your system using the Micro-USB to USB cable.



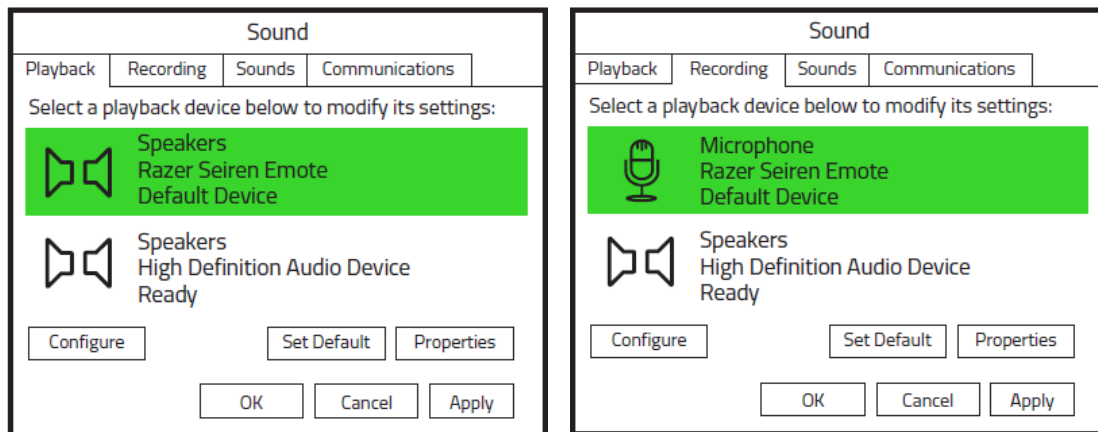
3. If you're using the microphone for the first time, you must set the Razer Seiren Emote as the default playback (output) and recording (input) device on your system.

i *When the microphone is set as the default playback device, an audio output device (such as a headphone) must be connected to its 3.5 mm headphone port. This will allow you to listen to the audio output and your audio recording at the same time.*

Step 1: Open the sound settings from **Control Panel > Hardware and Sound > Manage audio devices** or right-click on the sound icon in the system tray, and then select **Playback devices**.



Step 2: Under the **Playback** and **Recording** tabs, select Razer Seiren Emote from their corresponding lists and click the **Set Default** button.

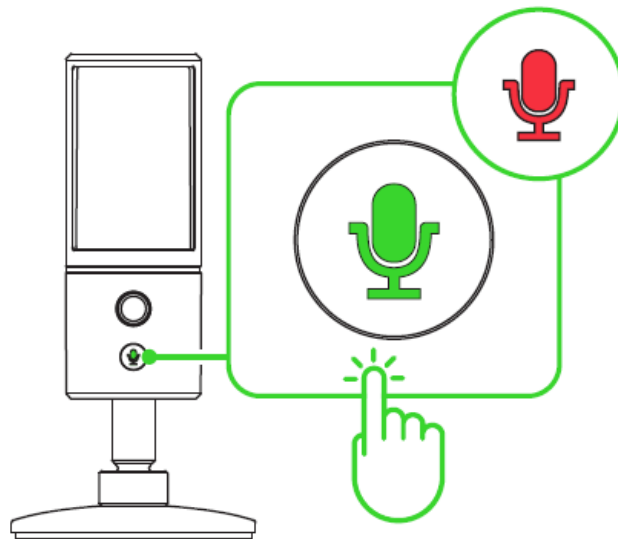


4. Use the Razer Synapse app to control the headphone volume and even adjust the sensitivity of the microphone when capturing sound. Simply install Razer Synapse when prompted or download the installer from [razer.com/synapse](https://www.razer.com/synapse)

5. USING YOUR RAZER SEIREN EMOTE

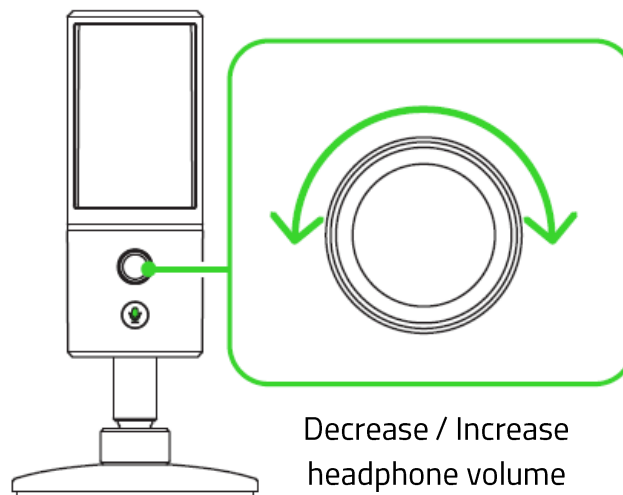
MUTING THE MICROPHONE

Press the microphone mute button to mute or unmute the microphone. The microphone mute LED will light up in red when the microphone is muted.



ADJUSTING THE HEADPHONE VOLUME

Rotate the headphone volume control clockwise or counterclockwise to increase or decrease the headphone volume.



6. CONFIGURING YOUR RAZER SEIREN EMOTE VIA RAZER SYNAPSE

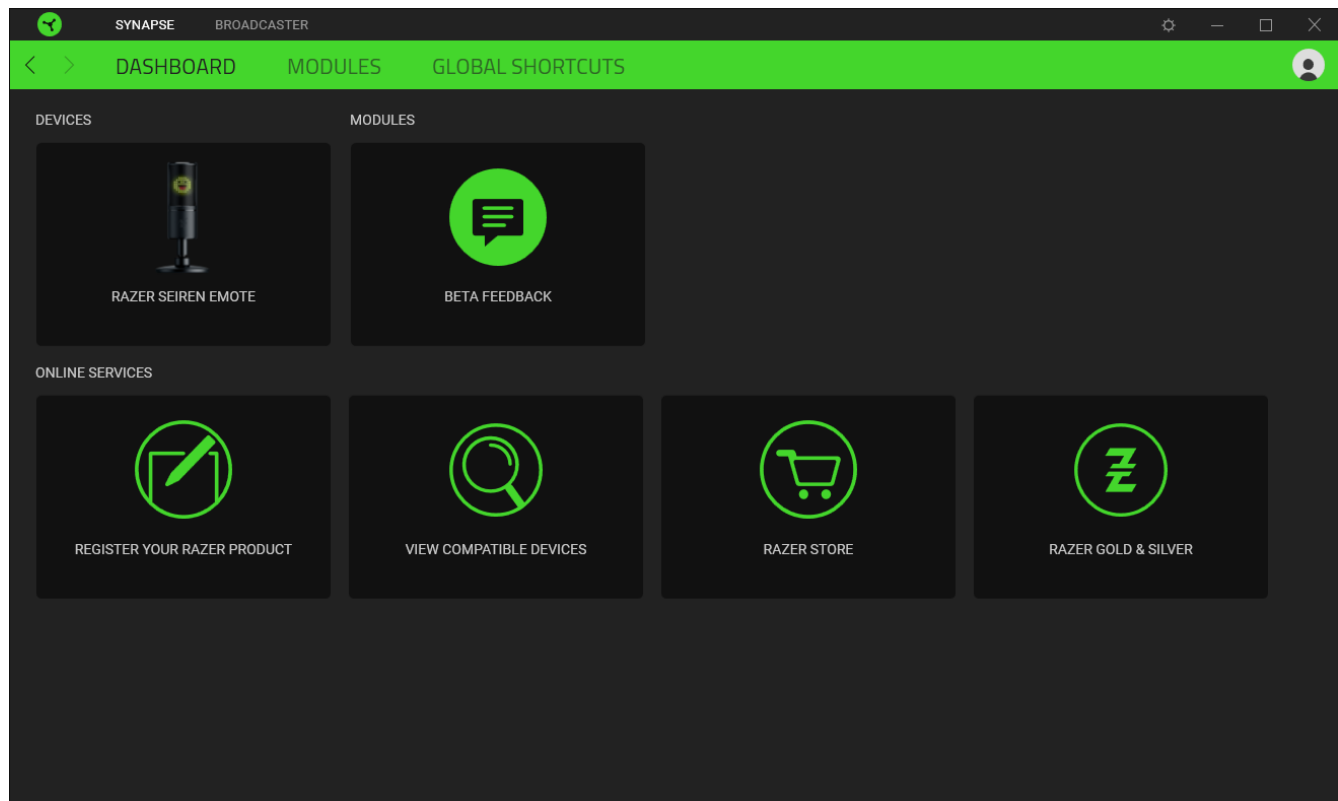
i *Disclaimer: Internet connection is required for installation, updates and cloud-based features. Registering for a Razer ID account is recommended, but optional. All listed features are subject to change based on the current software version, connected device(s), and supported apps and software.*

SYNAPSE TAB

The Synapse tab is your default tab when you first launch Razer Synapse.

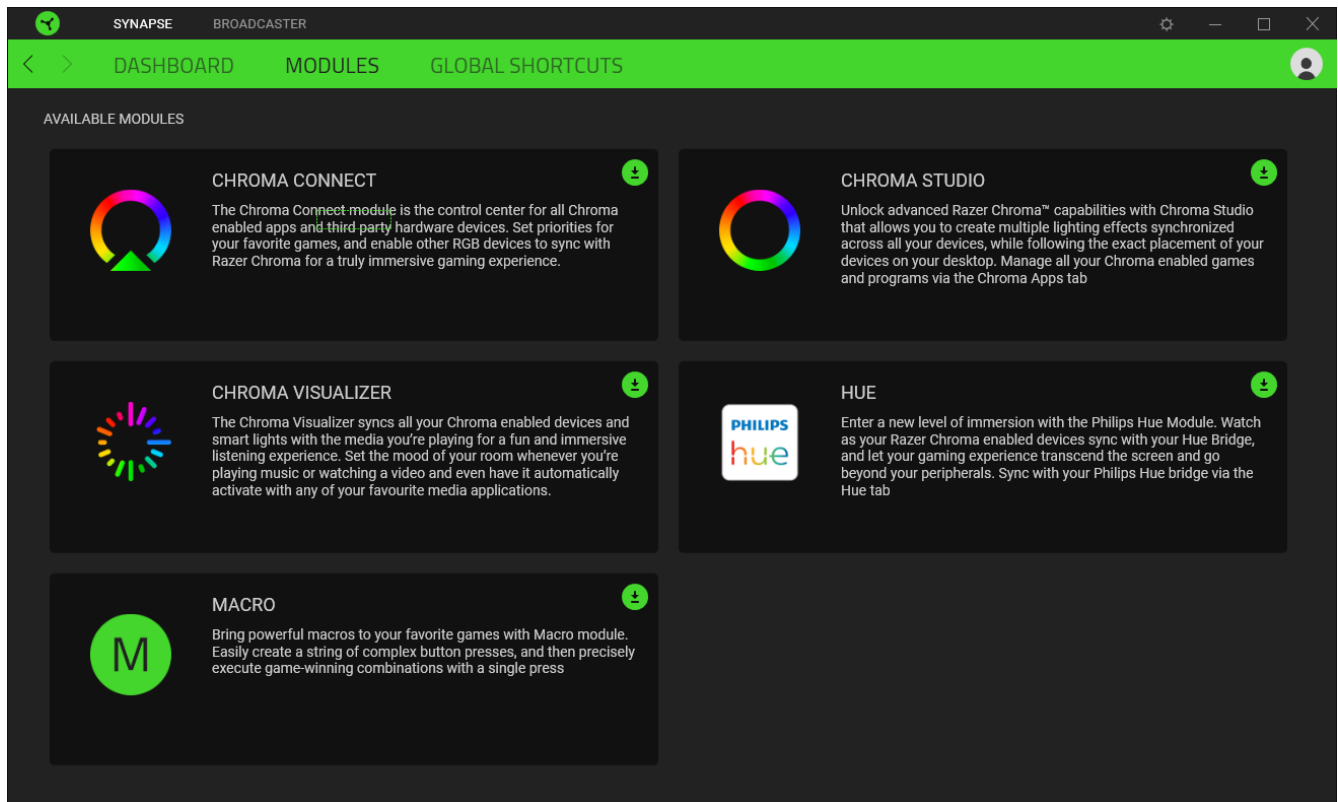
Dashboard

The Dashboard subtab is an overview of your Razer Synapse where you can access all your Razer devices, modules, and online services.



Modules

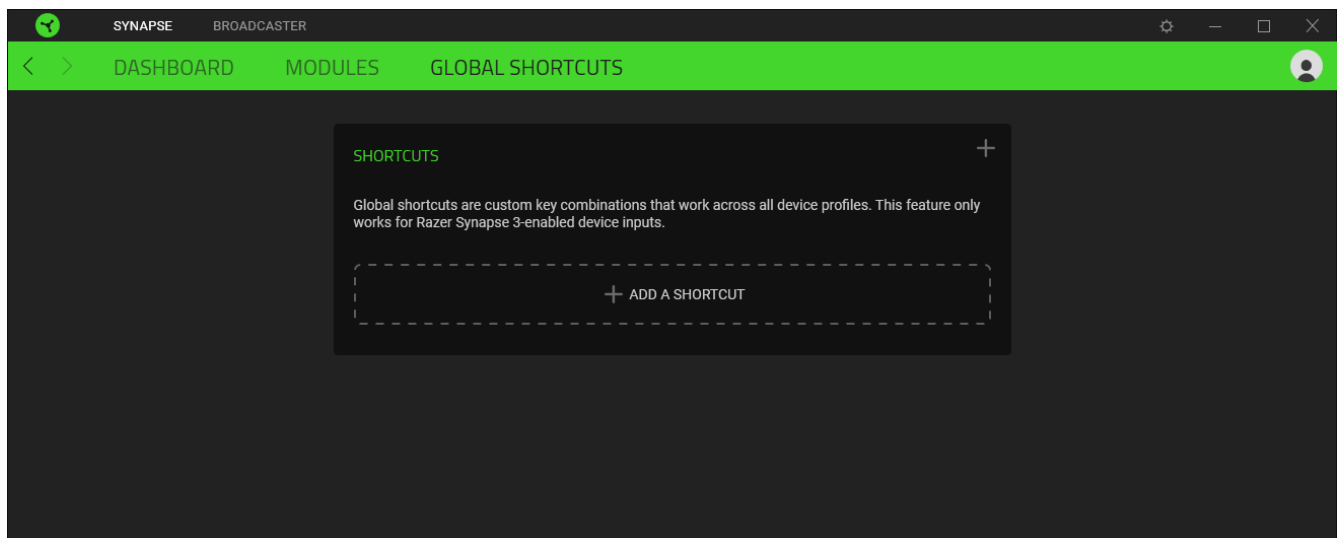
The Modules subtab displays all installed and available modules for installation.



Global Shortcuts

Bind operations or Razer Synapse functions to custom key-combinations from any Razer Synapse-enabled device inputs which apply across all device profiles.

 *Only Razer Synapse-enabled device inputs will be recognized.*

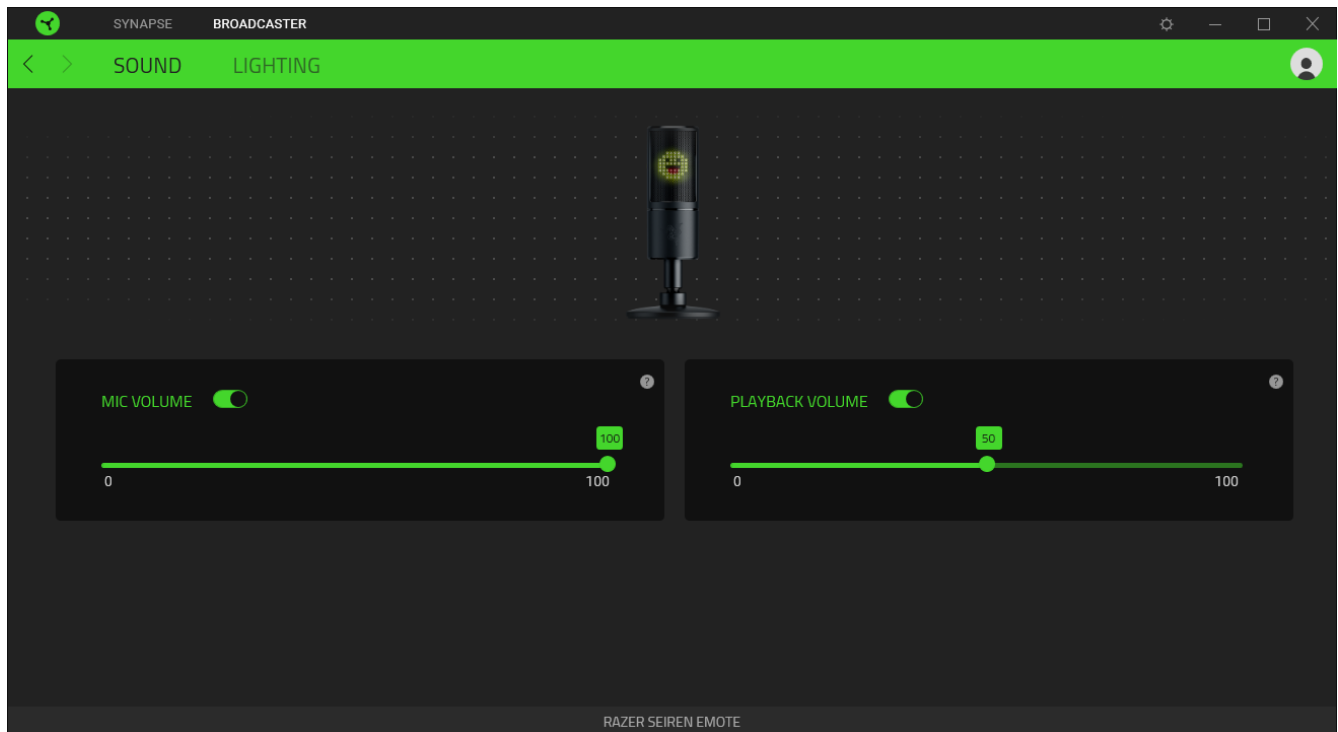


BROADCASTER

The Broadcaster tab is the main tab for your Razer Seiren Emote. From here, you can adjust your device's settings such as its mic and playback volume.

Sound

The Sound subtab is for adjusting the mic and playback volumes of your device.



Mic volume

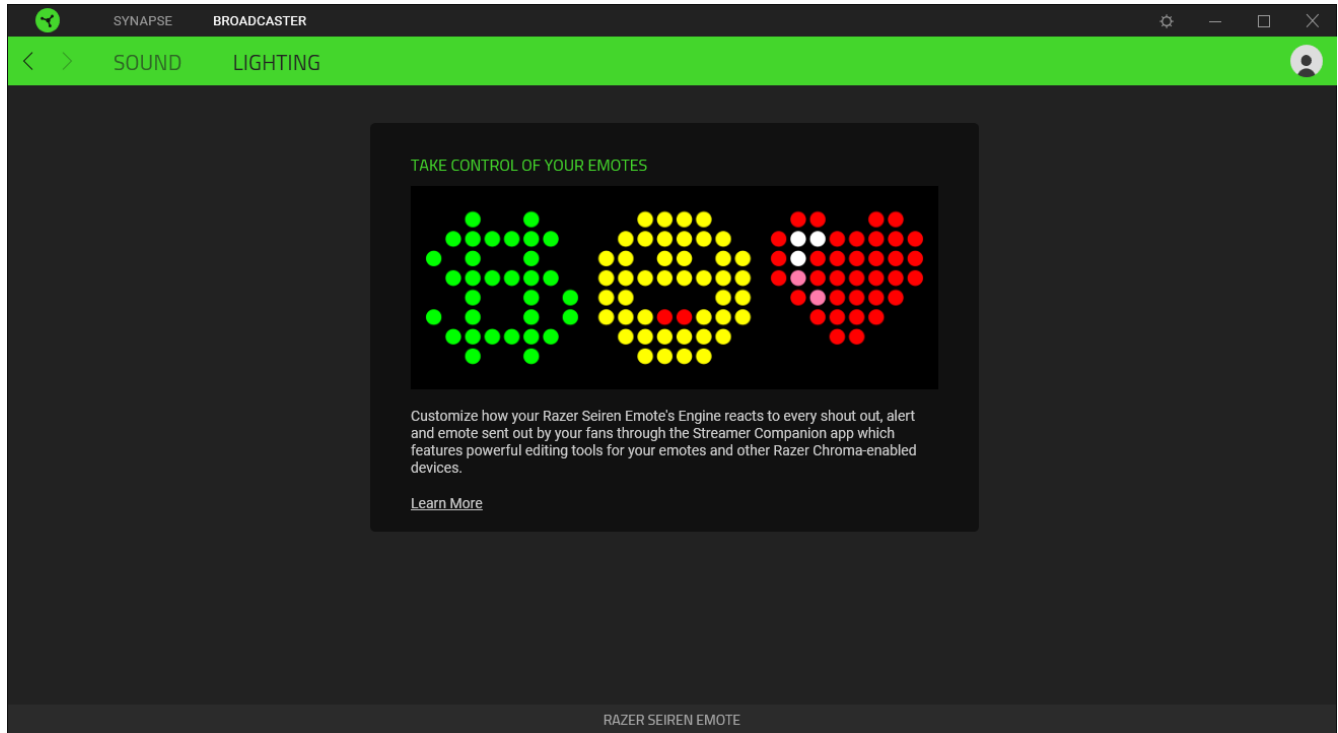
Mute the microphone by toggling the Mic Volume option or use the slider to increase or decrease the sensitivity of the microphone.

Playback volume

Adjust the slider to increase or decrease the volume of the audio output device connected to the 3.5 mm headphone port or mute it by toggling the Playback Volume option.

Lighting

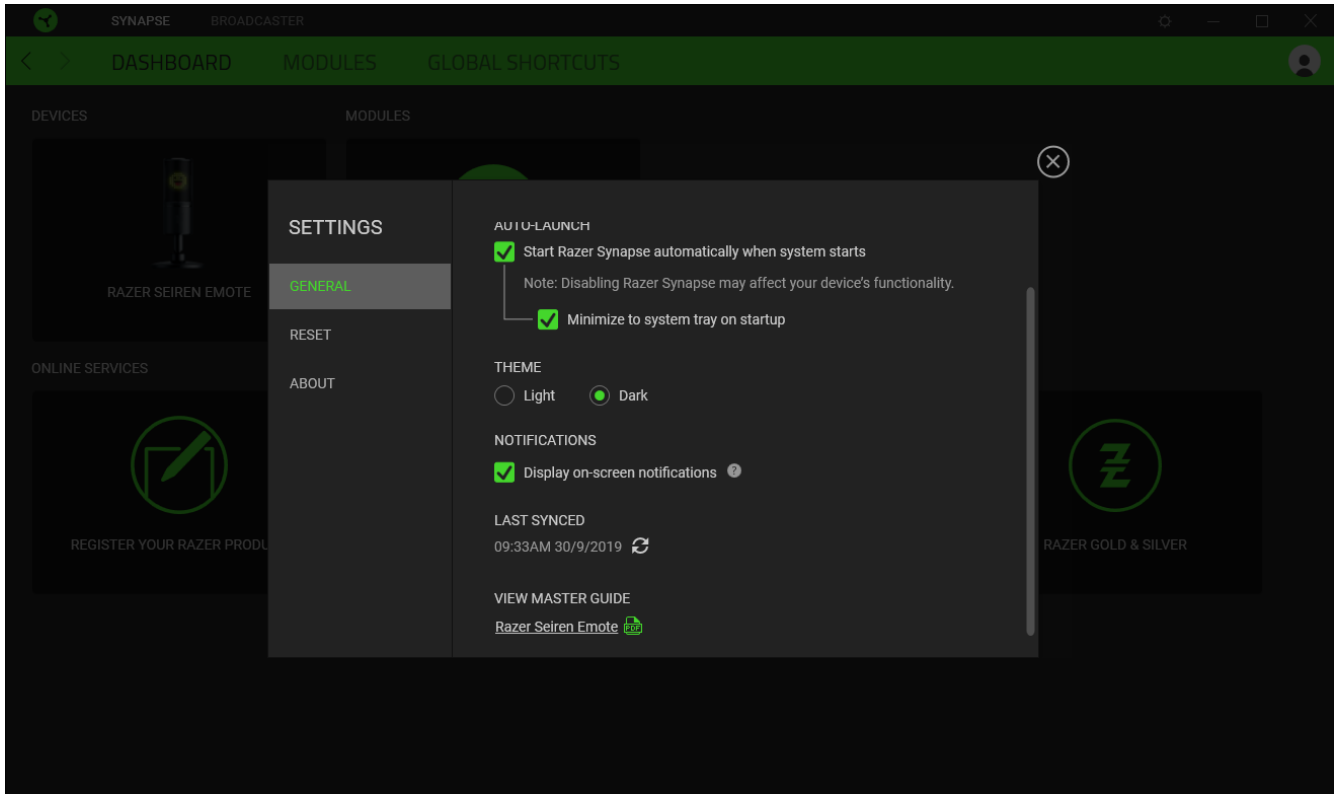
The Lighting subtab provides access to the Streamer Companion App which allows you to customize and showcase hundreds of stream reactive emoticons that you can synchronize with your audiences emotes, alerts and shout outs. [Learn more about the Streamer Companion app](#)



- i** *As the Streamer Companion App will be using the lighting effects from Razer Synapse, make sure to download and install the Chroma Connect module from the Modules subtab, and that Razer Synapse is running when using the app.*

SETTINGS WINDOW

The Settings window, accessible by clicking the (⚙️) button on Razer Synapse, enables you to configure the startup behavior and display language of Razer Synapse, view the master guides of each connected Razer device, or perform factory reset on any connected Razer device.



General tab

The default tab of the Settings window. The General tab enables you to change the software's display language, start-up behavior, and display theme. You may also manually sync your profiles to the cloud (↻) or view the master guide of all connected Razer devices and installed modules.

Reset tab

The Reset tab allows you to perform a factory reset on all connected Razer devices with on-board memory and/or reset Razer Synapse tutorials to acquaint yourself again with Razer Synapse's new features on its next launch.

! *By resetting a Razer device, all profiles stored on the selected device's on-board memory will be erased.*

About tab

The About tab displays brief software information and copyright statement and provides relevant links for its terms of use. You may also use this tab to check for software updates, or as a quick access to Razer's social communities.

7. SAFETY AND MAINTENANCE

SAFETY GUIDELINES

In order to achieve maximum safety while using the Razer Seiren Emote, we suggest that you adopt the following guidelines:

Should you have trouble operating the device properly and troubleshooting does not work, unplug the device and contact the Razer hotline or go to support.razer.com for assistance.

Don't take apart the device (doing so will void your warranty) and don't attempt to operate it under abnormal current loads.

Don't puncture nor insert foreign objects into any of the device's openings.

Don't use or install the device and its components near water, moisture, solvents, or other wet surfaces, nor expose the device to high temperatures or direct sunlight for an extended period of time.

Keep the device and its components away from liquid, humidity or moisture. Operate the device and its components only within the specific temperature range of 0°C (32°F) to 40°C (104°F). Should the temperature exceed this range, unplug and switch off the device in order to let the temperature stabilize to an optimal level.

Listening to excessively loud volumes over extended periods of time can damage your hearing. Furthermore, legislation of certain countries permits a maximum sound level of 86dB to affect your hearing for 8 hours a day. We therefore recommend that you reduce the volume to a comfortable level when listening for prolonged periods of time. Please, take good care of your hearing.

MAINTENANCE AND USE

The Razer Seiren Emote requires minimum maintenance to keep it in optimum condition. Once a month we recommend you unplug the device from the computer and clean it using a soft cloth or cotton to prevent dirt buildup. Don't use soap or harsh cleaning agents.

8. LEGALESE

COPYRIGHT AND INTELLECTUAL PROPERTY INFORMATION

©2019 Razer Inc. All rights reserved. Razer, the triple-headed snake logo, Razer logo, “For Gamers. By Gamers.”, and “Powered by Razer Chroma” logo are trademarks or registered trademarks of Razer Inc. and/or affiliated companies in the United States or other countries.

Windows and the Windows logo are trademarks of the Microsoft group of companies.

XSplit and XSplit Broadcaster are registered trademarks of Splitmedialabs Limited.

Razer Inc. (“Razer”) may have copyright, trademarks, trade secrets, patents, patent applications, or other intellectual property rights (whether registered or unregistered) concerning the product in this guide. Furnishing of this guide does not give you a license to any such copyright, trademark, patent or other intellectual property right. The Razer Seiren Emote (the “Product”) may differ from pictures whether on packaging or otherwise. Razer assumes no responsibility for such differences or for any errors that may appear. Information contained herein is subject to change without notice.

LIMITED PRODUCT WARRANTY

For the latest and current terms of the Limited Product Warranty, please visit [razer.com/warranty](https://www.razer.com/warranty).

LIMITATION OF LIABILITY

Razer shall in no event be liable for any lost profits, loss of information or data, special, incidental, indirect, punitive or consequential or incidental damages, arising in any way out of distribution of, sale of, resale of, use of, or inability to use the Product. In no event shall Razer’s liability exceed the retail purchase price of the Product.

GENERAL

These terms shall be governed by and construed under the laws of the jurisdiction in which the Product was purchased. If any term herein is held to be invalid or unenforceable, then such term (in so far as it is invalid or unenforceable) shall be given no effect and deemed to be excluded without invalidating any of the remaining terms. Razer reserves the right to amend any term at any time without notice.